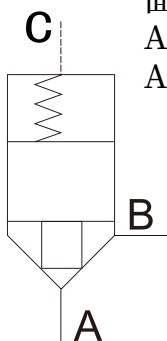




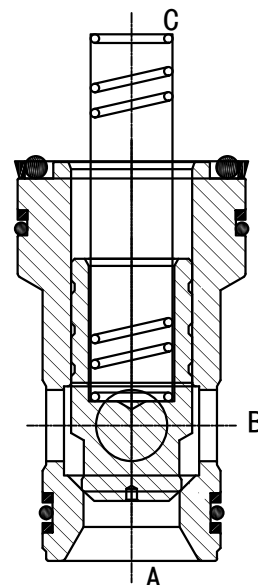
机能符号 SYMBOLS:



面积比:  
Area ratio:  
Aa:Ab=2:1



16-100通径  
示意图  
16-100 diameter  
Schematic diagram



16-100通径  
结构图  
16-100 diameter  
Structure Diagram

ZY	-	LCV		-	E	-		10
----	---	-----	--	---	---	---	--	----

通径16	=16
通径25	=25
通径32	=32
通径40	=40
通径50	=50
通径63	=63
通径80	=80
通径100	=100

(DESIGN NUMBER)  
设计编号

(CRACKING PRESSURE)  
开启压力

00	0.0KG(不带弹簧)
05	0.5KG
10	1.0KG
20	2.0KG
30	3.0KG
40	4.0KG
50	5.0KG

(DIRECTIONAL & FLOW CONTROL LOGIC VALVES)  
方向-流量控制阀

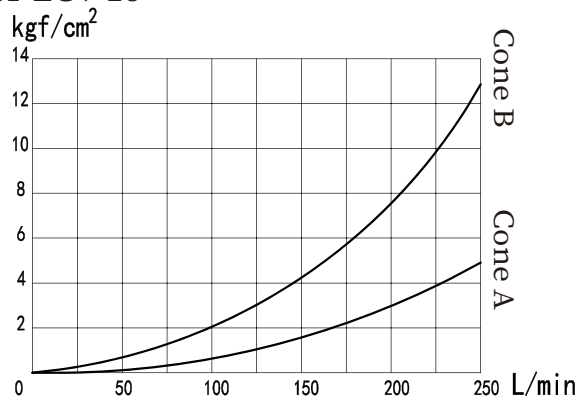
型式 MODEL	最高使用压力 MAX.OPERATING PRESSURE kgf/cm <sup>2</sup>	开启压力 CRACKING PRESSURE kgf/cm <sup>2</sup>	最大流量 MAX.FLOW L/min	重量 WWIGHT kg
ZY-LCV-16	315	05:0.35 20:2.0 50:4.5	130	0.18
ZY-LCV-25			350	0.43
ZY-LCV-32			500	0.87
ZY-LCV-40			850	1.59
ZY-LCV-50			1400	2.74
ZY-LCV-63			2100	5.81
ZY-LCV-80			3400	11.1
ZY-LCV-100			7000	21.2



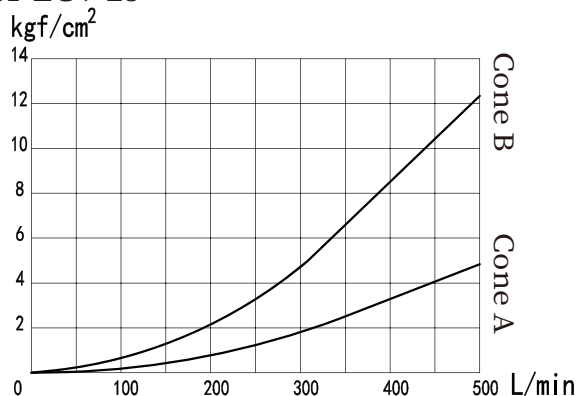
性能曲线(在使用HLP46,  $t=40^{\circ}\text{C}\pm 5^{\circ}\text{C}$ 测得)

Performance curve (measured with HLP46,  $t = 40^{\circ}\text{C} \pm 5^{\circ}\text{C}$ )

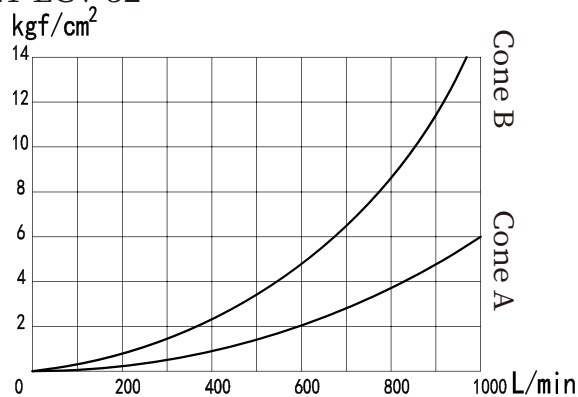
ZY-LCV-16



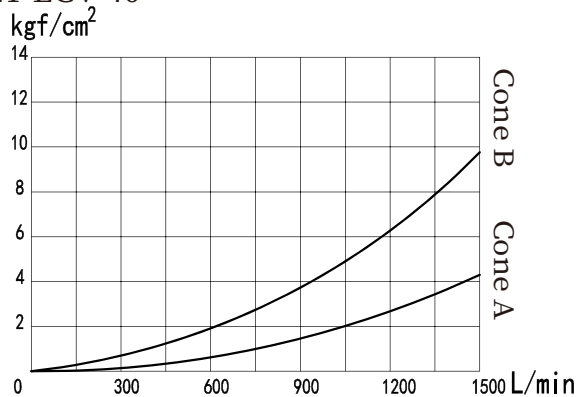
ZY-LCV-25



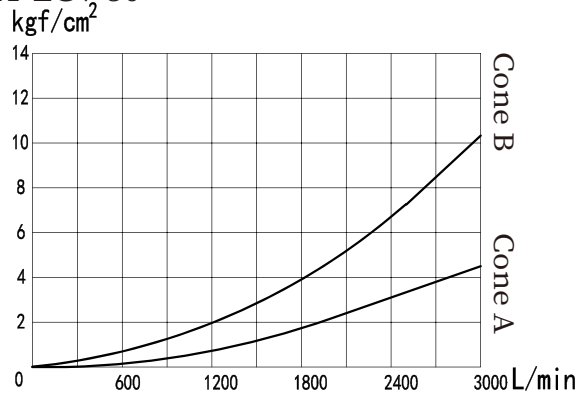
ZY-LCV-32



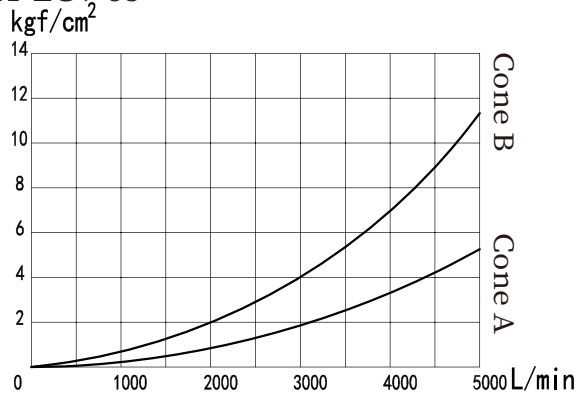
ZY-LCV-40



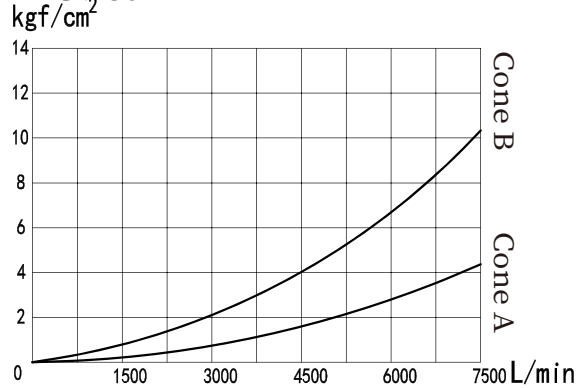
ZY-LCV-50



ZY-LCV-63



ZY-LCV-80



ZY-LCV-100

