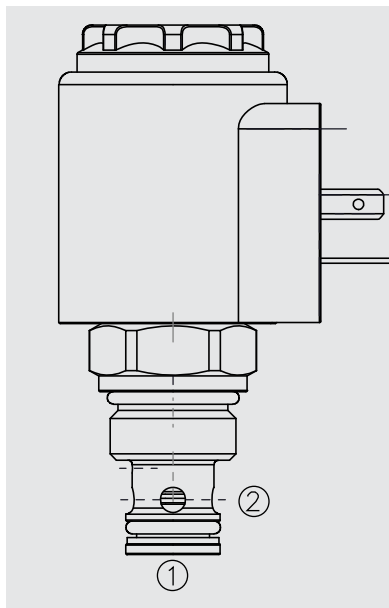


ZY-WSM06020Z-01 座阀, 2 通, 常闭
ZY-WSM06020Z-01 Poppet, 2-Way, N.C., Closed

描述 DESCRIPTION:

电磁驱动、2 通、常闭、座阀式、液压螺纹插装阀, 用于要求低泄漏的负载保持应用。
A solenoid-operated, two-way, normally closed, poppet-type, screw-in hydraulic cartridge valve, designed for low leakage in load-holding applications.

工作原理 OPERATION:

断电时, **ZY-WSM06020Z-01**, 从端口2到端口1的阀门关闭。在相反的方向有自由 流过阀门。气门活塞 打开时压差为 近似的1.5bar(检查功能)。

通电后, 有自由流动 通过阀门从端口2到端口1。阻止从端口1到端口2的回流。

请注意: 在先导操作电磁阀中 换档性能和响应的气门 时间视情况而定。压力很大 驱动过程中的液滴和体积流量。

When de-energized, the **ZY-WSM06020Z-01** the valve is closed from port 2 to port 1.

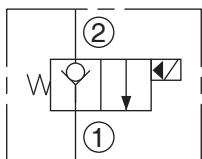
In the reverse direction there is free flow through the valve. The valve piston opens at a differential pressure of approx. 1.5 bar (check function)..

When energized, there is free flow through the valve from port 2 to port 1. Return flow from port 1 to 2 is prevented.

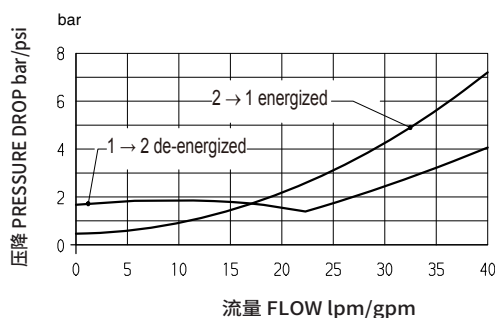
Please mind: In pilot operated solenoid valves, shift performance and response times depend i.a. very much on pressure drop and volume flow during actuation.

机能符号 SYMBOLS:

ISO:


性能图 PERFORMANCE: (Cartridge Only)

measured at $v = 34 \text{ mm}^2/\text{s}$, $T_{oil} = 46^\circ\text{C}$


特性 RATINGS:

工作压力:最大 350 bar

标称流量:最大 40 L/min

内部泄漏:无泄漏 最大 5滴/分钟(0.25 cm³/分钟), 350 bar

温度范围:-40°C至100°C, 标准丁腈橡胶密封

线圈工作额定值:可在85%至115%的额定电压范围内连续工作

响应时间:207 bar (3000 psi)时为额定值的85%

介质:粘度介于7.4~420 cSt (50~2000 sus)的矿物油或具有润滑作用的合成油

阀孔:ZY-06020;

Operating Pressure: max. 350 bar

Nominal flow: max. 40 L/min

Internal Leakage: Leakage-free max. 5 drops/min (0.25 cm³/min) at 350 bar

Temperature: -40 to 100 °C with standard Buna seals;

Coil Duty Rating: Continuous up to max. 115 % of the nominal voltage at 60 °C ambient temperature ;

Response time: energized: approx. 35 ms de-energized: approx. 50 ms

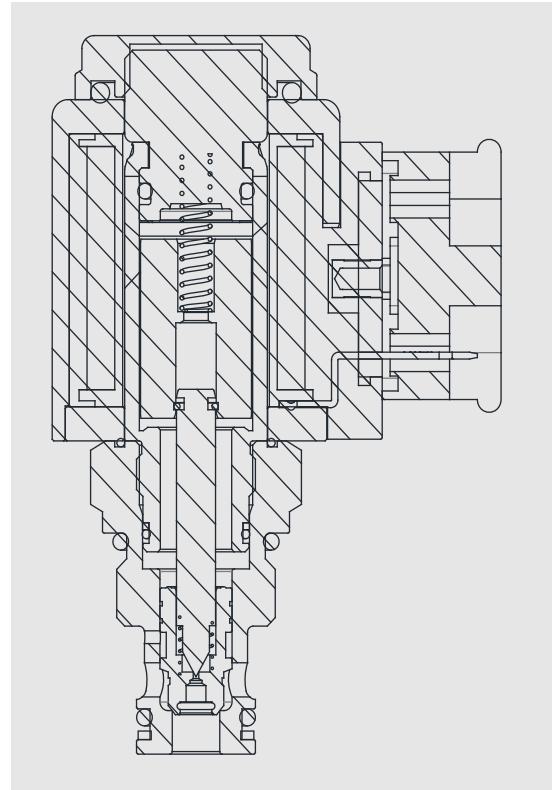
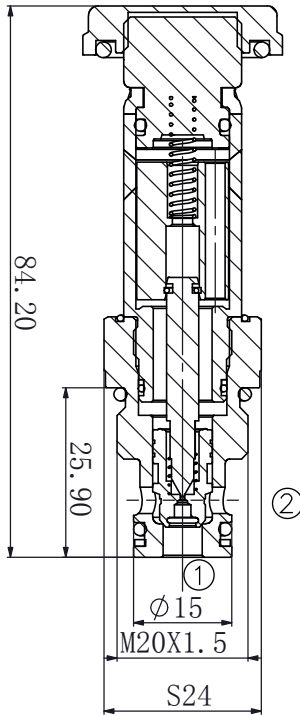
substantially extended response times possible at other operating conditions;

Fluids: Mineral-based or synthetics with lubricating properties at viscosities of 7.4 to 420 cSt (50 to 2000 sus);

Cavity: ZY-06020;

ZY-WSM06020Z-01

尺寸 DIMENSIONS:



特点 FEATURES:

- 线圈密封件, 保护电磁阀系统
- 紧凑的设计可以在连接外壳和控制块上进行节省空间的安装
- 暴露表面镀锌镍以增加腐蚀保护

- Coil seals protect the solenoid system
- Compact design enables space-saving installation in connection housings and control blocks
- Exposed surfaces zinc-nickel plated for increased corrosion protection

ZY-WSM06020Z-01

(Option) 选项
(None) 无(空白)
(Manual Override)
手动覆盖 M

(Seals) 密封材料
Buna N(Sta)
丁腈橡胶(标准型) N
(Fluorocarbon) 氟橡胶 V

标准线圈电压 (Voltage Std. Coil)

无线圈**	0
10 VDC	10
12 VDC	12
24 VDC	24
36 VDC	36
48 VDC	48
24 VAC	24
110 VAC	110
115 VAC	115
220 VAC	220
230 VAC	230

**包括标准线圈螺母
*仅限DS、DW或DL终端
**Includes Std. Coil Nut AG
† DS, DW or DL terminations only.

E型线圈(E-Coil)

10 VDC	10
12 VDC	12
20 VDC	20
24 VDC	24

标准线圈终端(VDC) Termination(VDC)Std.Coil

DS	Dual Spades 双扁形接头
DG	DIN 43650
DL	Leadwires 导线(2)
DL/W	Leads w/Weather-Pack® Connectors 导线, 带连接器
DR	Deutsch DT04-2P

标准线圈终端(VAC) Termination(VAC)Std.Coil

AG	DIN 43650
AP	1/2英寸导线管

E型线圈终端(VDC) Termination(VDC)E-Coil

ER	Deutsch DT04-2P (IP69K Rated)符合标准
EY	Metri-Pack® 150 (IP69K Rated)符合标准

Coils with internal diode are available. Consult factory.
提供带内置二极管的线圈. 请咨询工厂